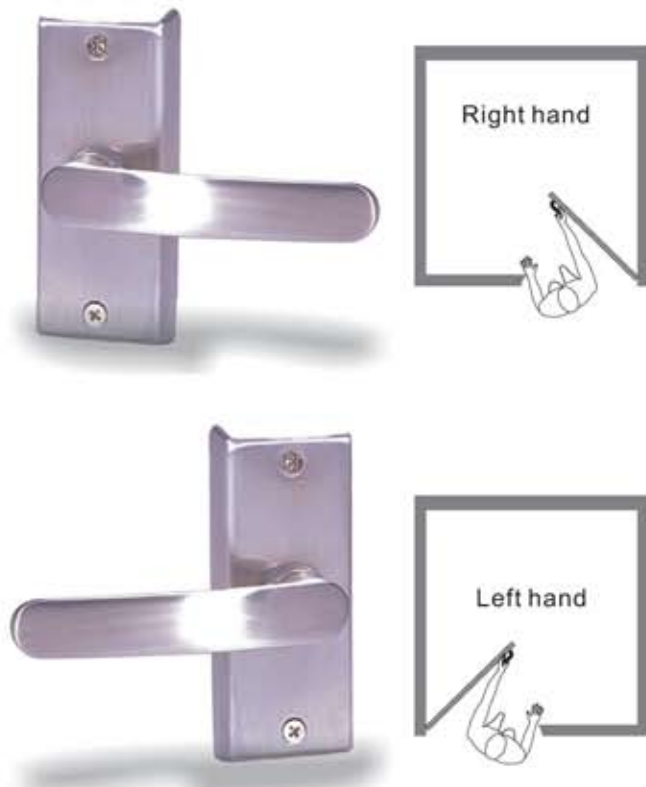


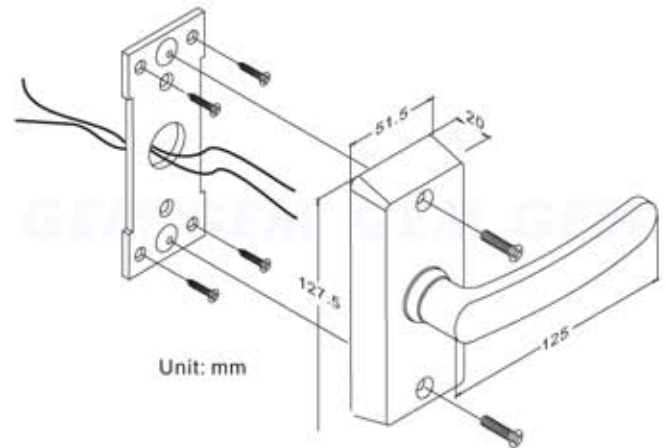
Statement

LHS-500 switched Lever Handle built in switch output (N/C N/O contacts) for access controller connections. Solid constructed unit brings door egress convenience.

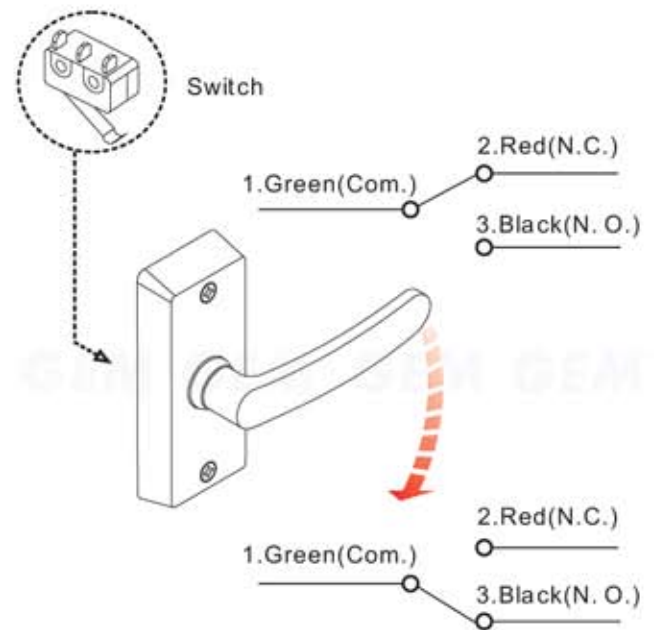


Before installation make sure door is "Left Hand" or "Right Hand".

Dimension



Application



Warranty

The product is warranted against defects in material and workmanship while used in normal service for a period of 1 year from the date of sale to the original customer. The GEM policy is one of continual development and improvement; therefore GEM reserves the right to change specifications without notice.