

**SAVE THESE INSTRUCTIONS**  
DEALER/INSTALLER: GIVE TO HOMEOWNER

# **ENCLOSURE KIT**

Model #STEP-ENC for Flat-Bottom, Above-Ground Pools

## **ASSEMBLY INSTRUCTIONS**



Made in U.S.A. by

**CONFER**  
*plastics inc.*

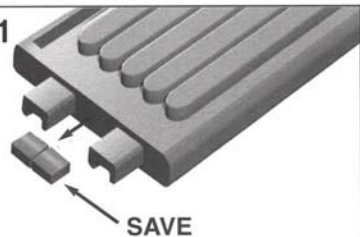


# ASSEMBLY INSTRUCTIONS

## ENCLOSURE KIT MODEL #STEP-ENC (complete kit consists of two cartons)

PARTS LIST	HARDWARE	TOOLS REQUIRED FOR ASSEMBLY:
<b>Qty. Description (Carton 1 of 2)</b> 1 Connecting Step 2 Connecting Rail 2 Gate Adapter Post 2 Set of Pickets (single, double, triple) <b>The following parts are supplied in the gate carton:(Carton 2 of 2)</b> 1 Gate Installation Manual 1 Gate w/hardware & padlock 1 Hinge Mounting Post 1 Latch Mounting Post	<b>Qty. Description</b> 40 #10x1-1/4" Screw 12 #10 x 3/4" Screw 12 Protective Cap	<ul style="list-style-type: none"> <li>• Pliers</li> <li>• Mallet (or Hammer) and block of wood</li> <li>• Drill Motor (Cordless)</li> <li>• Phillips Bit</li> </ul>
Assemble the two STEP-1 units as per their instructions, but do not attach the mounting brackets to the posts (as described in Step 9). These parts will not be used. Also, do not attach the handrails to the posts (as described in Step 11 of the STEP-1 instructions). For best installation results, the outside unit should be placed on flat patio blocks on level ground.		

### Step 1



Using a pair of pliers twist off the locking wedges from both ends of the connecting step and SAVE.

### Step 2

Lay one of the connecting rails down on a clean, flat surface. Push the end of the connecting step into the openings of the connecting rail until fully seated. Make sure the "tread" surface of the step is facing up towards the rails.



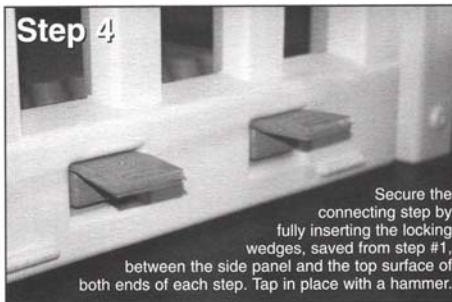
### Step 3

Lay the second connecting rail down and push the opposite end of the connecting step into the openings until fully seated.



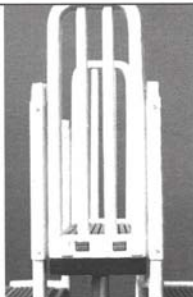
### Step 4

Secure the connecting step by fully inserting the locking wedges, saved from step #1, between the side panel and the top surface of both ends of each step. Tap in place with a hammer.



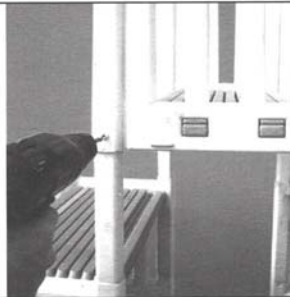
### Step 5

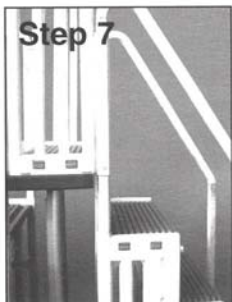
With one of the assembled step units at the desired location inside the pool, and the second unit placed outside the pool, slide the assembled connector kit down over the upper handrail posts until it is resting on the pool top seat. **IMPORTANT: DO NOT stand on the top steps of the units until fully assembled.**



### Step 6

Fasten the connector kit to the handrail posts using (16) #10 x 1-1/4" screws (eight per side) at each of the pre-marked locations.





### Step 7

Attach the handrails, to the inside unit only, as described in step 11 of the STEP-1 instructions.



### Step 8

Slide the gate adapter posts down over the short handrail posts of the outside unit until they bottom out.



### Step 9

Insert the ends of the notched handrails into the open ends of the posts on the outside unit. Fasten in place using four #10 x 1-1/4" screws.

## Step 10



Align one of the triple pickets into the notches of the handrail at the top of the unit. Fasten the pickets in place, at the top of the pickets, using the #10 x 3/4" screws. Continue placing and fastening the double pickets and then the single picket. Repeat for the opposite handrail. Cover the ends of the screws with the protective caps.

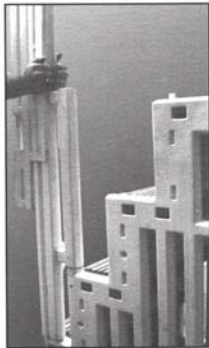
## Step 11

Fasten the pickets to the step unit at the pre-marked locations with twelve #10 1-1/4" screws. Also, secure the gate adapter posts and upper handrail posts in place with #10 x 1-1/4" screws at the pre-marked locations.



## Step 12

Gate installation: see instructions enclosed with gate. There are two differences for this installation. For this installation the gate posts slide over the adapter posts as shown here. And; You must also fasten the lowest corner of that flange to the step unit as shown (see photo at far right). NOTE: The hinge post must be on your right-hand side (as you are looking up the steps).



**IMPORTANT:** Fasten the lowest corner of each flange to the step as shown below.



# SAFETY RULES

Kit **MUST** be installed per manufacturer's instructions

Kit to be used with STEP-1 only

Check the contents of this carton with the parts and hardware list.  
If any parts are missing return the carton and contents to your dealer.

Do not attempt to assemble or install this kit if there are **ANY** shortages.

For proper assembly and installation follow all instructions in the sequence shown in this manual.

Before using the product, after assembly and before installation, go over the instructions and procedures again to make sure nothing has been overlooked.

Be sure and safe. The manufacturer is not responsible for improper assembly, installation and use.

**DANGER:** Never use an electric drill in or around the pool.

**ALWAYS KEEP GATE LOCKED WHEN NOT IN USE**

## CONFER PLASTICS, INC. LIMITED, PRO-RATED FIVE YEAR WARRANTY

Confer Plastics, Inc. warrants their products to be free from defects in workmanship and materials for one year from date of purchase. After the first year the cost to replace a part is as follows:

2nd Year - 20%	
3rd Year - 40%	Of current parts list price,
4th Year - 60%	plus shipping/handling charges.
5th Year - 80%	

### DO NOT RETURN DEFECTIVE PART TO DEALER

The defective part should be returned, postpaid, to: Confer Plastics, Inc.

97 Witmer Road	Or call us:
North Tonawanda	(800) 635-3213
N.Y. 14120 U.S.A.	(716) 694-3100

Enclose proof-of-purchase (receipts, etc.) showing date purchased, your name, address, and daytime phone number.

You will be notified of cost to replace part. This warranty gives you specific legal rights, and you may also have other rights which may vary from state to state.

MADE IN THE U.S.A. by:



**CONFER**  
*plastics inc.*

97 Witmer Road  
North Tonawanda, NY 14120-2421  
Toll Free U.S. 800-635-3213  
716-694-3100 / FAX 716-694-3102  
[www.conferladders.com](http://www.conferladders.com)

Printed in U.S.A.